



*Hello Mesa College Community! .....*

**Weekly Update from Prez Hands** provides a brief overview of the exciting efforts taking place within our community. The updates are also a great way to tell our collective story of success, and to document our journey of becoming the Leading College of Equity and Excellence. Enjoy!

.....

OFFICE OF THE *President*



**“TAKING A STAND AGAINST HUNGER”**

### Federal Shutdown Impact on CalFresh

The federal shutdown that began October 1 has delayed CalFresh benefits, leaving over **400,000 San Diegans** temporarily without food assistance. This pause represents **\$73 million** in delayed aid and **\$130.6 million** in lost local economic activity.

### What to Know

- Only **November benefits** are delayed at this time — eligibility and enrollment continue.
- **Students should still apply** for CalFresh.
- **The Stand's Fresh Success Program** remains unaffected for now.
- Benefits will be **issued retroactively** once the government reopens.
- **CalWORKs and Medi-Cal** are not currently impacted.

### How Mesa is Supporting Students

- **Food Pantry (K106):** Mon–Thurs 8am–5:30pm, Fri 8am–1pm — extra take-home food available.
- **Markets:** Nov. 3 (1–2pm) & Nov. 20 (11am–1pm) with expanded distributions.
- **Basic Needs Counseling:** [Apply online](#) for emergency financial help.
- **HHS County Worker:** Wednesdays, 10am–4pm at The Stand.
- **Events:**
  - Hunger & Homelessness Awareness Week: Nov. 17–21
  - Student Thanksgiving Meal: Nov. 20
  - CalFresh Application Event: Nov. 18, 1–4pm, BT 218/206

- **Community Food Resources:** [San Diego Food Bank](#), [Feeding San Diego](#), [211 San Diego](#)

#### How You Can Help

- **Donate to The Stand:**
  - In person (non-perishables within date)
  - **Online or via Amazon Wishlist** — select *The Stand's Gift Registry Address* at checkout.

This week, I will be attending the **Wisdom for Good Community College President retreat, hosted by The Kern Family Foundation**. This invitation-only experience, recommended through the Aspen Institute's College Excellence Program, brings together community college leaders focused on advancing student success and cultivating environments of human flourishing.



[Click here](#) to view the October 30, 2025 Board Report.

**On Monday, November 10, Mesa will host the SD Advance Fall Symposium.** The San Diego Advance Noncredit and Credit Alignment is a partnership between the SDCCE and the SDCCD. The initiative is designed to help students achieve their academic and career goals by providing a clear and seamless pathway to a degree or certificate program.

For more information, please [click here](#).

**Thank you to everyone who has contributed to Mesa's Adult Learner efforts this year, including those who participated in our first IEPI Partnership Resource Team visit.** Your engagement helped identify key priorities to strengthen how we serve adult learners.

#### **What's Ahead:**

Nov. 20: – Review data and refine our shared focus.

Dec. 1: PRT Site Visit #2 – The team will present Mesa's "menu of options" for next steps.

Mesa has also submitted a **Letter of Interest for the Jobs for the Future & College Futures Foundation Adult Learner Grant**, which could bring up to \$400,000 to enhance work-based learning and career services for adult learners.

Thank you to our incredible team for helping us create stronger pathways and greater opportunities for our adult learners at Mesa College.

### Fall 2025 Update

On Monday, priority registration started for Intercession and Spring 2026. While it has only been two days, we already have over 500 students enrolled in Intercession and over 1,300 students enrolled in the Spring 2026 semester. For Fall 2025, productivity is at 15.68 and overall headcount is 21,252. The headcount did lower slightly from last week, with the last remaining drops from the second eight-week courses and drops from full semester courses. Our Fall 2025 overall enrollment target was 5,970 FTES and we are still at 6,101 FTES. On the same day in Fall 2024, our FTES was 5,762.



### San Diego Community College District at the Grant Professionals Association – Grant Summit 2025

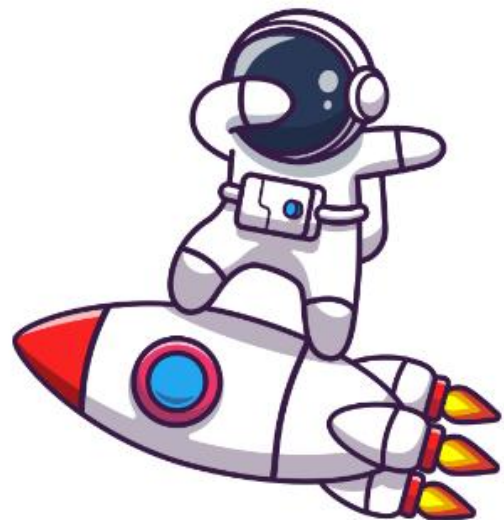
The San Diego Community College District stayed ahead of the curve as team members prepared for the *future of grants in the United States*. Representing SDCCD were Sheri “CoCo” Bazemore, Jonathan Sanchez, and Leland SImpliciano. The Grant Professionals Association’s Grant Summit 2025 (October 29 – November 1) in Baltimore, Maryland, brought together grant professionals from across the nation to reimagine the future of funding amid shrinking budgets and shifting priorities. As organizations navigate tighter resources, the conference emphasized innovation, collaboration, and equity-centered practices as essential to sustaining community impact in the face of change.

OFFICE OF *Student Services*

*New Issue*  
Alert

[Click here for the latest Mesa Journeys Newsletter!](#)

The Mesa Journeys newsletter gives a more in-depth look at all the great things that are happening on our campus. We encourage all faculty and staff to pass this along to our students, and also to sign up to receive these newsletters straight to their inboxes! Click below to sign up and for more information about Mesa Journeys:  
<https://linktr.ee/mesajourneys>







**Mesa College wrapped up National Transfer Month with a Transfer Panel and UC San Diego Day.** In addition to our regularly scheduled application open labs, rep visits and counseling appointments/drop ins. We continue to offer application open labs through December 1, 2025, which is the priority deadline for most UCs and CSU.



**Mesa College’s Wellness Vending Machine continues to make a meaningful impact on campus accessibility and student well-being, with 1,593 products dispensed to date.** The most popular items include menstrual pads (897), tampons (345), and pain relievers such as Tylenol and Advil (167 combined) highlighting the importance of convenient access to essential health supplies. Located in a gender-neutral, high-traffic area, the vending machine offers both free and affordable wellness products, including emergency contraception, pregnancy tests, and condoms, empowering students to take charge of their health anytime they need.

November is Native American Heritage Month and Mesa College is offering the following events. *We strive to acknowledge Indigenous cultures, traditions, and achievements. Everyone is welcome.* [Click here](#) to view the Native American Heritage Month event.

**Native American Heritage Month**  
 ○ SAN DIEGO MESA COLLEGE ○  
 2025

|  |  |  |   |
|--|--|--|---|
| <b>NOVEMBER</b><br><b>1-30</b><br><b>SB BUILDING</b><br><b>3RD FLOOR</b>         | <b>Stories of Native American Women's History</b><br>A display highlighting the stories of ten Native American women and their roles in shaping Native American history.   | <b>TUESDAY</b><br><b>NOVEMBER 18</b><br><b>I4-306</b><br><b>10:00AM-11:00AM</b>          | <b>Transfer 101</b><br>It's never too early to think transfer. We are here to support you on the journey. Learn about the transfer pathway from Community College to a 4-year university. The Transfer Center will provide an overview of the transfer process and resources available to students.   |
| <b>TUESDAY</b><br><b>NOVEMBER 4</b><br><b>SB-111</b><br><b>1:00PM-3:00PM</b>     | <b>Native American Student Club Meeting: Film Screening</b><br>The Mesa College Native American Student Club will be screening a fun action film at their November monthly meeting. Students interested in joining the club are encouraged to attend for more information.   | <b>WEDNESDAY</b><br><b>NOVEMBER 19</b><br><b>BT-101</b><br><b>2:15PM-3:45PM</b>          | <b>What's the Deal with Thanksgiving?</b><br>Presentation on the origins and history of Thanksgiving, with an emphasis on the relationships of Native Americans with the holiday in the past and the present.   |
| <b>WEDNESDAY</b><br><b>NOVEMBER 12</b><br><b>LRC-229</b><br><b>1:00PM-2:00PM</b> | <b>Indigenous Languages of Latin America</b><br>Come and learn about the array of indigenous languages spoken at Latin America. We will focus on indigenous languages spoken in Mexico. At the end we will learn some basic phrases in Nahuatl!  | <b>THURSDAY</b><br><b>NOVEMBER 20</b><br><b>MESA FLAG POLE</b><br><b>10:00AM-10:30AM</b> | <b>Kumeyaay Flag Raising</b><br>To demonstrate our collective commitments in action, we take the historic action of raising the Kumeyaay-Diegueño Nation flag in celebration and recognition of the Native peoples of this region. Raising and displaying the flag symbolizes our commitment to our indigenous communities and the Kumeyaay people. |
| <b>WEDNESDAY</b><br><b>NOVEMBER 12</b><br><b>D102</b><br><b>11:30AM-12:00PM</b>  | <b>Where We Reside</b><br>Informational Presentation about the tribes of San Diego County, their history and current way of life. It will also contain an interactive component, encouraging students to investigate what tribal lands they reside on, where they were born, or where they grew up, if not from San Diego. | <b>THURSDAY</b><br><b>NOVEMBER 20</b><br><b>MESA QUAD</b><br><b>11:00AM-12:30PM</b>      | <b>Native American Heritage Month Resource Fair</b><br>Join us! This event is celebrating Indigenous cultures, traditions, and contributions. There will be resources and informational booths, promoting awareness, education, and community engagement. There will be Indigenous guests speakers and performances.                                |

**sdmesa.edu/native-american-heritage-month**  
 For more information or accommodations, contact: [Ldiaz@sdccd.edu](mailto:Ldiaz@sdccd.edu).

### Graduate School Planning

**Monday, Nov. 3**

**11am-12pm**

**Online via Zoom**

Thinking about graduate school?

Learn how to prepare early, understand degree options, and plan for applications while you're still in community college.

### Spring Into Spring

**Monday, Nov. 17**

**12pm - 2:00pm | Avanza I4-202**

**Monday, Dec. 1 | 12pm- 2:00pm |**

**Avanza I4-202**

Prepare for the Spring semester and stay on track with your education plan. Review resources, key deadlines, and success tips.

### Heart & Stones

**Wednesday, Dec. 3**

**10am - 11am**

**Avanza I4-202**

Explore mindfulness and stress-management tools to stay balanced and motivated through the semester.





Last Thursday, October 30th marked the first **Career Corners** in the BT Building.

**Career Corners** is a Career Hot Spot Service where students can meet with a Career Peer Ambassador for quick resume reviews, career questions, to schedule a future career appointment and learn more about the wide range of career services we offer.

Here are some student quotes from the experience:

"This is perfect, I was just looking for on campus job opportunities".

"Oh this is a fun fidget, I have an exam today so I'll definitely need this".

"This is my first semester at Mesa so I didn't even know we had these resources! I'll be sure to visit to get more information".

"I haven't been working lately because of my classes but I'll look into these career resources".

*Click on the flyer to enlarge*

**Native American Heritage Month 2025**

**NOVEMBER 1-30**  
SB BUILDING 3RD FLOOR

**Stories of Native American Women's History**  
A display highlighting the stories of ten Native American women and their roles in shaping Native American history.

**TUESDAY NOVEMBER 18**  
14-306  
10:00am-11:00am

**Native American Student Club Meeting: Film Screening**  
The Mesa College Native American Student Club will be screening a fun action film of their November monthly meeting. Students are encouraged to attend for more information.

**WEDNESDAY NOVEMBER 19**  
BT-101  
2:15pm-3:45pm

**Indigenous Languages of Latin America**  
Come and learn about the array of indigenous languages spoken in Latin America. We will focus on the indigenous languages spoken in Mexico. At the end we will learn some basic phrases in Spanish!

**THURSDAY NOVEMBER 20**  
MESA FLAG POLE  
10:00am-10:30am

**Where We Reside**  
Informational Presentation about the tribes of San Diego County, their history and current way of life. It will also contain an interactive component, encouraging students to investigate what tribe they reside on, where they were born, or where they grew up, if not from San Diego.

**THURSDAY NOVEMBER 20**  
MESA QUAD  
11:00am-12:30pm

**Transfer 101**  
It's never too early to think transfer. We are here to support you on the journey from community college to a four-year university. The Transfer Center will provide an overview of the transfer process and resources available to students.

**What's the Deal with Thanksgiving?**  
Presentation on the origins and history of Thanksgiving, with an emphasis on the contributions of Native Americans to the holiday in the past and the present.

**Kumeyaay Flag Raising**  
To demonstrate our collective commitment to diversity, we take the historic action of raising the Kumeyaay flag, a symbol of the native peoples of the region. Raising and displaying the flag symbolizes our commitment to our Indigenous communities and the Kumeyaay people.

**Native American Heritage Month Resource Fair**  
Join us this event is celebrating Indigenous cultures, traditions, and contributions. There will be resources on awareness, education, and community engagement. There will be indigenous guest speakers and performances.

**sdmesa.edu/native-american-heritage-month**  
For more information or accommodations, contact: [ldiaz@sdccd.edu](mailto:ldiaz@sdccd.edu).

SAN DIEGO MESA COLLEGE | Career Services

**VETERANS WEEK 2025**  
**VETERANS CAREER PANEL**

**WEDNESDAY NOVEMBER 12TH**  
11:15 AM - 12:15 PM  
@VETERANS SUCCESS CENTER (K103/104)

Listen and learn from Veteran Professionals who have created career pathways in diverse industry sectors!

**ANGEL ALVAREZ**  
Director Of Human Services  
Marine Corps Retired US Navy

**ZULMA HERALDEZ**  
Administrative Assistant IV  
Mesa Student Affairs Office Branch: US Navy

**GREGORY PACE**  
VRC Supervisor  
Grossmont College Branch: US Marines

**JESS TOUNZEN**  
Internal Communications Specialist  
Accera Health Branch: US Navy

**DERICK MOORE**  
Panel Moderator  
Project Assistant  
San Diego Mesa College Branch: US Marines

**FREE LUNCH IS PROVIDED ON A FIRST-COME, FIRST-SERVED BASIS**

(619) 388-2777 | [mesacareer@sdccd.edu](mailto:mesacareer@sdccd.edu) | 14-306, 3rd Floor | [www.sdmesa.edu/career](http://www.sdmesa.edu/career)

mesacruise@sdccd.edu' and 'For more information, contact (619) 388-2757'."/>

**PEER NAVIGATORS**  
**Scholarship Workshop**

**AVANZA WORKSHOP ROOM (4-202)**  
ZOOM ID: 874 3685 1441

**Join Us in learning about opportunities to earn free money!**

**Monday, November 10**  
4:30p - 5:30p  
**Thursday, November 13**  
1:30p - 2:30p

**\*Snacks will be provided!\***

Disability-related accommodations should be made five working days prior to the event via email at [mesacruise@sdccd.edu](mailto:mesacruise@sdccd.edu)

**For more information, contact (619) 388-2757**



## GET TO KNOW SDSU PROJECT REBOUND

Join us in learning about resources available at SDSU, including Project Rebound – a program dedicated to bridging the gap between incarceration and higher education.

Explore financial assistance programs, as well as transfer pathways to SDSU, and start building a network of staff and peers!

**Thursday, November 20, 2025**

**12:30pm - 2:00pm**

**Rising Scholars Center,  
Room 14-204**

**Food will be provided**



### FOR MORE INFORMATION, CONTACT:

- @mesarisingscholars
- (619) 388-5107
- MesaRisingScholars@sdccd.edu

<https://bit.ly/SDSUPProjectRebound>

CACM PRESENTS:

## Holiday Pie Making CLASS

**Make & Take two pies of your choice \$55**  
**Choose from Dutch Apple & Pumpkin Pie**

**Learn how to make your own holiday pies while supporting our Culinary Student Darrin Phillips who has been accepted to an internship in Spain!**

**Also, learn how to make a 2-minute pie dough in a food processor that will change your life.**  
**Recipes included**



**November 7, 2025 • 12-2PM**

**EMAIL CHEF TONYA WHITFIELD TO RESERVE  
YOUR SPOT & PIE CHOICES**  
**• TWHITFIE@SDCCD.EDU •**

### PROFESSIONAL DEVELOPMENT

## UNDOCUADVOCATE

**FLEX #: 30854**

Join us for a powerful session on transforming our campus into a hub of support for **UNDOCUMENTED** and mixed-status students!

Discover how this statewide movement is reshaping classrooms, offices, and campus culture as we recommit to serving all students with excellence.  
**In alignment with CCCCO's Vision 2030**, we're advancing equity in access, equity in support, and equity in success, breaking barriers, building bridges, and uniting across departments to become UndocuReady Together!

### LEARNING OUTCOMES:

- Why our campus culture matters
- Equity beyond a status: An anthropological look at undocumented students
- Let's get standardized, promising practices for a prepared California education system
- Protecting our undocumented students "to the economically wise thing to do" - CCCCO
- Common pitfalls and barriers to immigrant student equity
- Interdepartmental synergy key to immigrant student success

**FRIDAY, NOVEMBER 7TH, 2025**  
**10 AM - 12 PM | MC-211**



Receive a  
certificate of  
completion!

**QUESTIONS?**  
**BORDERLESS SCHOLARS  
PROGRAM**  
MESADREAMERS@SDCCD.EDU

**CONTINENTAL BREAKFAST & LUNCH WILL BE PROVIDED!**

This event is ADA compliant. For more information or to request accommodations no later than five (5) business days before this event, please contact: Angel Aguilar Garcia at [aguilar003@sdccd.edu](mailto:aguilar003@sdccd.edu)



SAN DIEGO MESA COLLEGE  
**PHI THETA KAPPA  
HONOR SOCIETY**

## \$5,000 SCHOLARSHIP OPPORTUNITY

### Scholarship Overview

The **All-USA Academic Team** recognizes high-achieving students who excel in academics, leadership, and service beyond the classroom. Open to both transfer and workforce students, this \$5,000 scholarship is awarded by college nomination only.

To learn more: <https://www.ptk.org/>



### Eligibility

- 3.50 minimum cumulative GPA
- Must be on track to a certificate or associate or bachelor's degree
- **OPEN TO MESA STUDENTS** (not just PTK)

(See website for other requirements)



### Apply Online

Mesa will nominate up to 4 students applicants (2 transfer, 2 workforce) to compete for national and All-State scholarships.



### Help & Support

MT2C tutoring center offers writing assistance and advising  
[www.sdmesa.edu/mt2c](http://www.sdmesa.edu/mt2c)



**Deadline:**  
**Nov 17, 2025**  
**@11:59pm**

**APPLY NOW!**  
<https://bit.ly/ptklogin>

Email Brittany Branson at [bbranson@sdccd.edu](mailto:bbranson@sdccd.edu)

SAN DIEGO MESA COLLEGE | Transfer Center

## Transfer Application Support

UC Application | CSU Application | Common Application

**OCTOBER - NOVEMBER:**

### VIA ZOOM:

- Mondays, 3 - 5 PM
- Fridays, 10 - 12 PM

Register for a Zoom Session:  
[bit.ly/TransferAppZoom2025](https://bit.ly/TransferAppZoom2025)



### IN-PERSON Room BT-207

- Tuesdays, 12 - 2 PM
- Thursdays, 1 - 3 PM

Register for an In-Person Session  
[bit.ly/TransferOpenLab25](https://bit.ly/TransferOpenLab25)



\*Please Note: When registering for an In-Person Session you must select the date you plan to attend.  
There will be no labs the following dates: 10/9, 11/11, 11/27, 11/28

### CSU USEFUL LINKS:

APPLICATION:  
[www.calstate.edu/apply](http://www.calstate.edu/apply)

CSU APPLICATION GUIDE:  
<https://tinyurl.com/csuguide25>

### UC USEFUL LINKS:

APPLICATION:  
[apply.universityofcalifornia.edu](https://apply.universityofcalifornia.edu)

UC APPLICATION GUIDE:  
<https://tinyurl.com/ucguide25>

[mesatransfer@sdccd.edu](mailto:mesatransfer@sdccd.edu) (619) 388-2473 14-306 (3rd Floor Student Services Bldg.)

SAN DIEGO MESA COLLEGE

Rising Scholars

## "I AM"

Join us for a day of empowerment, connection, and self-discovery! This event is all about embracing your inner power, celebrating your strength, and recognizing the beauty within.

FACILITATED BY RISING SCHOLARS COUNSELOR AVA GILL

**DATE: TUES. NOV. 18TH**

**TIME: 10:30AM - 12:00PM**

**LOCATION: AVANZA WORKSHOP  
ROOM, 14-202**

EMAIL: [MESARISINGSCHOLARS@SDCCD.EDU](mailto:MESARISINGSCHOLARS@SDCCD.EDU)

PHONE: (619) 388-5107

VISIT: STUDENT SERVICES BUILDING,  
2ND FLOOR, ROOM 204

SAN DIEGO MESA COLLEGE  
Mental Health Services

SAN DIEGO MESA COLLEGE  
Student Success and Equity

## Healing & Empowering Minds



Empowering Minds Healing Circle is a supportive space for Black students to connect, share, and heal in community. Join us for guided reflection, open dialogue, and collective empowerment.

**Thursdays | October 9 & November 13 | 2025**

**12:00pm - 1:00pm**

**I4-402**

For more information, contact 619.388.2774.

**UNDOCUMENTED SUPPORT SERVICES**

*Know Your Rights & Emergency Preparedness Workshops for Undocumented Families*

**Virtual Workshops**

**KNOW YOUR RIGHTS! EMERGENCY PREPAREDNESS**

*Learn about immigrant rights and family safety planning. Facilitated by SDCCD and Higher Education Legal Services. This workshop is open to all allies.*

Each workshop is from 6:00 p.m. to 7:00 p.m.

**Join Us on Zoom**

<https://sdccd-edu.zoom.us/j/85424752391>

San Diego City College

San Diego Mesa College

San Diego Miramar College

San Diego College of Continuing Education

For more information, or to request disability services (at least five business days in advance), contact Dean Lillian A. Garcia at lgarcia002@sdccd.edu.

SAN DIEGO MESA COLLEGE  
San Diego Community College District

## WE ARE HERE TO HELP! MESA COLLEGE TECH HUB



**CONNECTING CAMPUS THROUGH TECH**

The Tech Hub is designed to provide convenient, walk-up technology services for our students, faculty, and classified professionals.

**OUR SERVICES**

- Wi-Fi & Access:** Help connecting to SDCCD Wi-Fi.
- Canvas & Tools:** Setup and troubleshooting for Canvas, Zoom, Pronto, and more.
- Accounts & Login Help:** Password resets, Multi-Factor Authentication (MFA), SSO issues.
- Email:** Microsoft Outlook.
- General IT Support:** SDCCD devices, software, and digital resources.

**NEED HELP?**  
STOP BY THE TECH HUB IN THE STUDENT SERVICES LOBBY, FIRST FLOOR (I-400)

MON-THURS: 8:00 AM - 4:30 PM  
FRI: 8:00 AM - 1:00 PM

**CONTACT US OR SCAN THE QR CODE**

619-388-7000

<https://help.sdccd.edu>

**SCAN HERE**



## OFFICE OF *Institutional Effectiveness*

The Office of Institutional Effectiveness is excited to announce the launch of the redesigned **Awards Dashboard**, a new interactive tool that provides detailed insights into the awards earned by students at Mesa College.

This dashboard allows users to:

**Explore award trends** across programs and student groups.

**Evaluate efficiency metrics**, including time to completion and units earned.

**Analyze equity gaps** to determine whether awards are being earned proportionally across student populations.

These insights help track program effectiveness and inform strategies that guide students toward timely completion with fewer excess units.

You can access the **Awards Dashboard** [here](#).

To schedule a demo, ask questions, or provide feedback, please contact [acaetanofournier@sdccd.edu](mailto:acaetanofournier@sdccd.edu) and [ncortes@sdccd.edu](mailto:ncortes@sdccd.edu).

## OFFICE OF *Administrative Services*



JOIN CLASSIFIED SENATE IN SUPPORT OF LOCAL  
FAMILIES IN NEED - PLEASE DONATE!

## FOOD DRIVE FOR SAN DIEGO CHILDREN'S CENTER

OCTOBER 13 - NOVEMBER 7

### Most Needed Items:

**Food:** Peanut butter, boxed rice/pasta/potatoes, black and pinto beans, canned soup, canned vegetables, children's snacks, juice boxes

**Household:**

- hand soap
- dish soap
- reusable grocery bags

**Contact**

Thien-Y Trinh  
Classified Senate Member -At- Large  
ttrinh001@sdccd.edu



### DROP LOCATIONS

- Business & Technology Dean's office, BT-203
- Math & Science Dean's office, MS-301
- Allied Health Dean's office, S-300
- Veterans & Records, Student Services Bldg.
- the LOFT, LRC
- Institutional Effectiveness, A-109

The **Classified Senate** is proud to host a **Food Drive** for the **San Diego Children's Center** starting this week, **October 13th through November 7th!**

We invite you to join us in supporting local families in need by donating food and household essentials.

If you have any questions, please reach out to **Thien-Y Trinh**, Classified Senate Member-at-Large, at [ttrinh001@sdccd.edu](mailto:ttrinh001@sdccd.edu).



## FOUNDATION CORNER

A space to learn about our latest efforts to connect partners who share our passion for education with opportunities to give. See how fundraising can help you, our students, and Mesa's mission.

[Learn More](#)

BREAKING BARRIERS.  
EMPOWERING MINDS.  
TRANSFORMING FUTURES.



For those of you who generously offer scholarships to our students, we have kicked off the cycle of renewal. Please take a moment to let us know if you will be offering your scholarship this year. All renewals, including funding, are due by **November 10th**.



### **What is an Innovation Grant?**

Through a competitive process, the Foundation will award up to \$3,000 in grant funding to support projects, activities, and equipment that positively impact student success and drive innovation.

→ Access the official Request for Proposals here: [https://bit.ly/InnovationGrants26\\_RFP](https://bit.ly/InnovationGrants26_RFP)

### **How can I apply for an Innovation Grant?**

Submit a completed application form—~~found here~~—**no later than 11:59 pm on Friday, November 7, 2025.**

There are three steps to applying: 1) draft your content; 2) request letters of support from your Dean and VP; 3) submit your application for approval. For details...

→ Access a step-by-step guide and FAQs here: <https://bit.ly/InnovationGrants26-StepbyStep>

**Pro Tip:** Be sure to get an early start to allow time for gathering necessary approvals: the Dean and Vice President of your department must approve your application by the deadline. (Don't worry, this is explained in the application!)

### **How do I fill out my application?**

Use our step-by-step guide to applying for an Innovation Grant—~~found here~~. Reach out to [MesaGrantAdmin@sdccd.edu](mailto:MesaGrantAdmin@sdccd.edu) if you have any additional questions!

**Step 1:** Download and fill out the application practice template—~~found here~~. Consult with your Dean and Vice President during this process.

**Step 2:** Request letters of support from your Dean and VP. You may use the letter templates available here:

[https://bit.ly/InnovationGrants26\\_Dean\\_Letter](https://bit.ly/InnovationGrants26_Dean_Letter)

[https://bit.ly/InnovationGrants26\\_VP\\_Letter](https://bit.ly/InnovationGrants26_VP_Letter)

**Step 3:** Fill out and submit the online application ~~here~~. We ask that you do this in one sitting because you cannot save your work.

**Step 4:** Your application is completely submitted! Decisions will be announced in late December or early January.

### **Does my idea qualify?**

The Mesa College Foundation focuses on projects that 1) positively impact student success, 2) align with Mesa's strategic goals, and 3) deliver innovation. Stipends/salary for staff are not eligible expenses.

**I'm ready to apply!**

Awesome! Because the online application does not allow you to save and edit your work, we've provided a "drafting playground" (Application Questions template) below.

Access an application drafting playground here: <https://bit.ly/InnovationGrants26> Application Questions

Access the official application here: <https://bit.ly/InnovationGrants26>

For questions, or to schedule Office Hours with a Program Officer, contact [MesaGrantAdmin@sdccd.edu](mailto:MesaGrantAdmin@sdccd.edu) or book Office Hours [here](#).

We look forward to receiving your proposals and facilitating the process of granting out funds! We will be helping out by sending reminders as we move through each step of the process. Be on the lookout for emails coming from me or Dr. Mike Lettieri.

Thank you for all your hard work for Mesa students!

### Want to learn more about grant seeking?

View the flex workshop hosted by Dr. Michael Lettieri, who is leading grant writing efforts, and Krista Stellmacher, CFRE and Director in service to the Office of Resource Development and Foundation.

[View Recording](#)

## Participatory Governance

To learn more about our Associated Students, Academic Senate, and Classified Senate, please visit the links below:

[Associated Students](#)

[Academic Senate](#)

[Classified Senate](#)

## In The Know

For additional information on what is happening on campus and in our community - visit the links below:

[Mesa College Newsroom](#)

[Mesa College Events Calendar](#)

Ashanti Hands, Ed.D.

President | San Diego Mesa College

Creating conditions that matter for our students to succeed!

7250 Mesa College Drive, A-104, SD, CA 92111 | 619.388.2721

[Mesa College](#) | [Student Support Services](#)

