



*Hello Mesa College Community!* .....

**Weekly Update from Prez Hands** provides a brief overview of the exciting efforts taking place within our community. The updates are also a great way to tell our collective story of success, and to document our journey of becoming the Leading College of Equity and Excellence. Enjoy!

.....

OFFICE OF THE *President*

 SAN DIEGO MESA COLLEGE

**ROOTED in Purpose.  
GROUNDED in Equity.  
GROWING Together.**

**Convocation / SPRING 2026**  
**Thursday, January 29, 2026**  
**8:00 am 📍 Mesa College Gym**

San Diego Mesa College | 7250 Mesa College Drive, San Diego, California, 92111-4998

**Join us for Convocation Spring 2026 this Thursday!**

8:00 a.m. - 8:30 a.m. | Coffee and Pastries in Mesa Gym

8:30 a.m. - 10:00 a.m. | Program with Campus Highlights, Updates and Olympian Spirit awards

10:00 a.m. – 10:35 a.m. | Dr. Gina Garcia, Keynote Speaker, Servingness 2.0: An Updated Approach to HSIs

10:35 a.m. – 10:40 a.m. | Breakout Instruction and Transition Time

10:40 a.m. - 11:25 a.m. | Breakout Sessions I (45 mins)

11:25 a.m. – 11:30 a.m. | Transition

11:30 a.m. - 12:15 p.m. | Breakout Sessions II \*(45 mins)

12:15 p.m. - 1:00 p.m. | Lunch in the Mesa Quad

[Click here](#) to register for the breakout sessions.

[Click here](#) for the convocation schedule and description of breakout sessions.



**Congratulations to our Classified Professionals Learning Committee for coordinating an outstanding MiniCON event!** This one-day workshop brought the Mesa community together to share ideas and strategies centered on Equity and Excellence, AI and technology, health and fitness, and more.

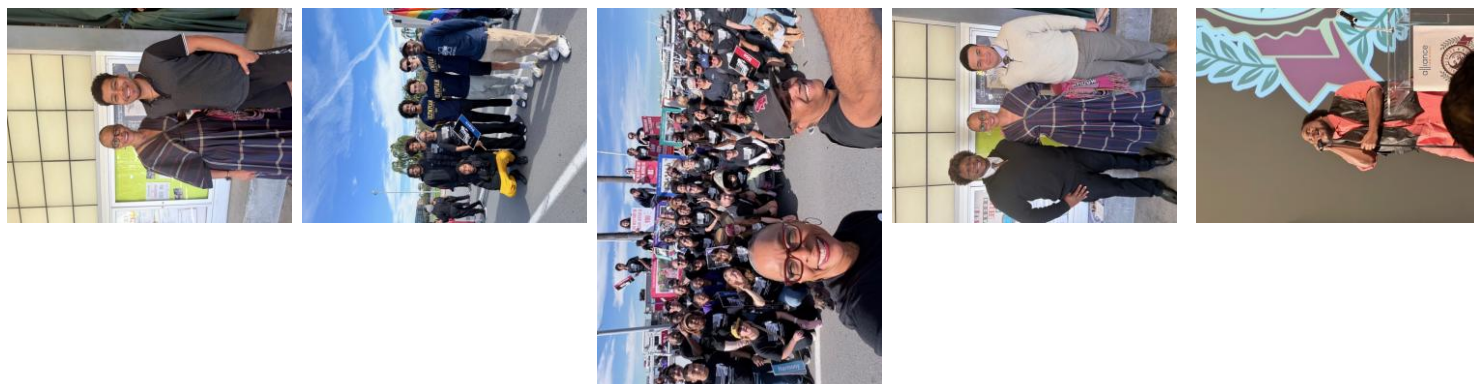


Mayor Todd Gloria speaks during the annual rally of San Diego Youth Services at City Hall on Friday, Nov. 7, 2025, in San Diego. (Michael Ho / For The San Diego Union-Tribune)

#### **SDCCD Negotiation Agreement of the Golden Hall**

Mayor Todd Gloria has given a speech on the future projects of San Diego in regard of the continued momentum on housing, infrastructure, and major redevelopment projects while acknowledging ongoing challenges. One positive highlight from Mayor Gloria's remarks was his announcement of plans to enter into an exclusive negotiating agreement with the San Diego Community College District for the redevelopment of Golden Hall in the downtown Civic Center. .

[Click here](#) to read the full article.



Mesa College honored the legacy of Dr Martin Luther King, Jr. over the holiday weekend. We attended the **YMCA Human Dignity Award Breakfast** on Friday, the **44<sup>th</sup> Annual MLK Jr Parade** on Sunday and the **All Peoples Alliance**

**San Diego Breakfast on Monday.** It was great to see so many members of our community show up for these events and to see so many Mesa College alumni as a part of the official programs.

---

## OFFICE OF *Instruction*

### **Interession and Spring 2026**

With Interession 2026 wrapping up in the next two weeks, our analysis will focus on Spring 2026. We continue to see students enrolling with 1,254 more students registering since last week Tuesday. The current headcount is 19,750 and FTES is now 5,676, which brings us within 3 percent of meeting our Spring 2026 target FTES. We have already started to look at in- demand courses based on the waitlists and our existing resources.



The LOFT has released the *Never Stop Learning - Spring 2026 Edition 1*! [Click here](#) to read the newsletter.

### **Catalyst Registration Reminder**

Catalyst 2026 will be our 8th annual Catalyst event. This space was co-created with Mesa colleagues to support our faculty at the start of Spring Flex Week. [Click here](#) to sign up for a class.

---

## OFFICE OF *Student Services*

### **Volunteer to help support students during Welcome Week**

Welcome Week is just around the corner, and Student Affairs is excited to host the Welcome Week Info Booth on the Mesa Commons! This is a fantastic opportunity to provide a warm welcome, answer questions, offer directions, and ensure our new and returning students feel supported as they kick off the new semester. If you would like to volunteer at the Welcome Week Info Booth on Monday and Tuesday, then please contact **Courtney Lee** ([clee@sdccd.edu](mailto:clee@sdccd.edu)) by email in the Student Affairs office with your availability."



## CONNECT WITH A COUNSELOR

If you are or intend to enroll in a certificate or degree program at Mesa College, we strongly recommend that you meet with a counselor to discuss your plans

### DROP-IN SESSION

Get help from a counselor without an appointment! 10-15 minute drop-in sessions are available in-person or over the phone and are typically utilized to create a **1-2 semester education plan**, select classes, address academic probation concerns, obtain prerequisite clearance, and more.

### Who can use Drop-in

- Student with SDCCD Student ID or Prospective students
- **Note: First-time students need to complete the Pre-registration Workshop Video + Quiz before seeing a counselor**

### Add your name to the list

- **In person:** Visit General Counseling (14-303)
- **Call:** (619) 388-2672
- **Drop-ins are served on a first-come, first-served basis.**

### 1-HOUR APPOINTMENT

One-hour appointments are typically utilized to create your personalized **comprehensive education plan**, discuss transfer and career planning, submit financial aid appeals, and more. You can talk to the counselor in-person or on Zoom.

### Eligibility

- Currently enrolled in at least one class at Mesa,
- Completed a semester of college coursework,
- Transcripts from outside of California are received and evaluated (if applicable)

### Schedule

- **In person:** Visit General Counseling
- **Call:** (619) 388-2672
- **Online:** [bit.ly/MesaCounselingAppointment](https://bit.ly/MesaCounselingAppointment)
- **Appointments are scheduled one week in advance**

(619) 388-2672
[sdmesafollowupegmail.com](mailto:sdmesafollowupegmail.com)
[esdmesacounseling](https://www.instagram.com/esdmesacounseling)

The Counseling Department has released their *Counseling 101 Guidebook*! [Click here](#) to view the Guidebook.

# SCHOLARSHIPS

## Apply Now!

[sdmesa.edu/scholarships](https://sdmesa.edu/scholarships)

Over 115 Scholarships

Awards from \$250-\$2000

FREE to apply

Open to all enrolled Mesa College students

All GPAs encouraged to apply

**December 5, 2025**  
Applications open

**February 17, 2026**  
Last day to apply

## Don't miss out!

Financial support to help you reach your goals.

For more information or additional questions, please contact [mesascholarship@sdccd.edu](mailto:mesascholarship@sdccd.edu)

Scholarship applications are now available! Please encourage your students to apply to the Mesa College Foundation Scholarships. [Our Scholarships webpage has all the information you might need!](#)

The final deadline to apply is **Thursday, February 17th, at 11:59pm!**

You may also direct students to [the Apply for Mesa Scholarships video](#), and [a brief video tutorial we created on how to get started with applying](#).

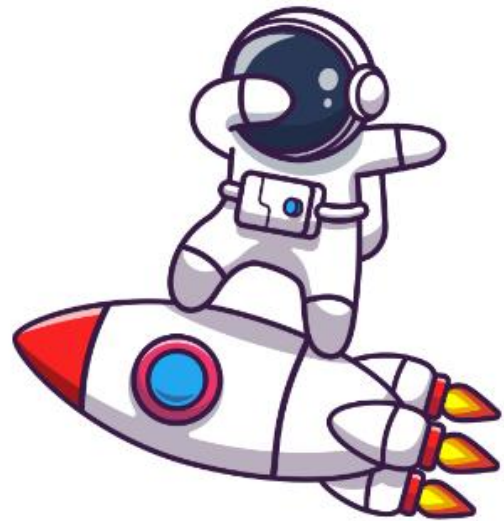
Scholarship Application Workshops for Mesa College Scholarships are now available! [Follow this link for more information about the workshops](#). *25 students who attend a workshop session and apply for at least 3 scholarships will be randomly chosen to receive a \$50 gift card!*

If you would like a classroom presentation about our scholarships, then please contact Zulma Heraldez ([zheraldez@sdccd.edu](mailto:zheraldez@sdccd.edu)).

New Issue  
Alert

[Click here for the latest Mesa Journeys Newsletter!](#)

The Mesa Journeys newsletter gives a more in-depth look at all the great things that are happening on our campus. We encourage all faculty and staff to pass this along to our students, and also to sign up to receive these newsletters straight to their inboxes! Click below to sign up and for more information about Mesa Journeys: <https://linktr.ee/mesajourneys>



**Click on the flyer to enlarge**



## Empowering Student Parents:

*A Collaborative Approach to Success through CalWORKs, CARE, and The Stand Basic Needs Resource Center*

Join us in exploring how a collaborative partnership between the San Diego Mesa College CalWORKs, CARE, and The Stand Basic Needs Resource Center is leveraged to provide support for student parents at a community college. Learn about the unique challenges faced by student parents, resources available at San Diego Mesa College, and effective strategies to cultivate collaboration and student success.

Facilitated by CARE Counselor Coordinator, Grace Aumoeualogo; CalWORKs Adjunct Counselor Coordinator, Alondra Gomez; Basic Needs Coordinator, Johanna Aleman; and Dean of Student Success and Equity, Leticia Diaz



**Tuesday, January 27, 2025**



**10:00 - 10:45 AM**



**LRC Room #222**



For more information or accommodations, please contact [gaumoeualogo@sdccd.edu](mailto:gaumoeualogo@sdccd.edu)

## STUDENT SERVICES DISCOVERY QUEST



Explore and uncover valuable resources that support student success. Whether you're a student, faculty member, or classified professional, we'd love for you to be part of the adventure.

Come learn, connect, and have some fun along the way!

**DATE** Tuesday, January 27, 2026

**TIME** 1:00 - 1:45 PM

**LOCATION** AS Conference Room I4-409  
(4<sup>th</sup> floor of the Student Services building)

*This session will include movement to different offices, as teams will be tasked with visiting 3-4 different student services departments.*  
For accommodations, please contact Leticia Diaz: [ldiaz@sdccd.edu](mailto:ldiaz@sdccd.edu) or 619-388-2884

# SAN DIEGO MESA COLLEGE SCHOLARSHIP INFO SESSION & WRITING WORKSHOP

**START YOUR  
APPLICATION TODAY!**

<https://sdmesa.academicworks.com>

**DEADLINE TO APPLY 2/17/2**

- Get an overview of Mesa scholarships
- Get a guided tour of the online application
- Brainstorm and work on your essays with Writing Tutors
- Ask questions. Get answers.

# BILINGUAL COLLEGE FAIR

January 24, 2026

LMEC

2875 Ocean View Blvd  
San Diego, CA. 92113

9:00am - 3:00pm

- Community Colleges
- Universities
- Financial Aid Assistance
- Workshops
- And More

Representatives  
from local &  
international  
colleges &  
universities



Register here

For more information please contact the Community  
Affairs Department of the Mexican Consulate:

+619-308-9930

comunidadessdi@sre.gob.mx

México  
Consulado General de México  
en San Diego



SAN DIEGO  
MESA COLLEGE  
Ventanilla de  
Orientación Educativa

LMEC  
LOGAN MEMORIAL  
EDUCATIONAL CAMPUS

SAN DIEGO UNIFIED  
SCHOOL DISTRICT

CSAC  
CALSOF  
SAN DIEGO ANI  
IMPERIAL COUNTY  
CONSORTIUM

## In-Person Session LRC Writing Center (2nd floor)

- Tues. 2/10 @11:10am
- Thurs. 2/12 @11:10am
- Tues. 2/17 @11:10am



### WE ARE HERE TO HELP

Looking to boost your  
personal statement? Mesa  
Tutoring & Computing  
Center (MT2C) has drop-ins  
and appointments available  
with writing tutors!

## Zoom Session

Zoom ID: 97943255785

- Tue. 1/13 @3pm
- Thurs. 1/15 @10am
- Wed. 1/21 @3pm
- Thu. 1/22 @4pm
- Mon. 1/26 @10am
- Fri. 1/30 @10am
- Wed. 2/11 @3:45pm
- Tues. 2/17 @3pm

## Get 1 on 1 Support!

1PM - 2 PM EVERY MONDAY

In-Person:

Visit the Student Affairs Office @ I4-408

For Zoom:

Please email: Adrian Balingit  
at vbalingit@sdccd.edu

For accommodations, please email at least 5  
business days prior to the event.

Contact: Brittany Branson  
bbransonsdcd.edu

Sponsored by Student Affairs and MT2C

## EXCITING NEWS!

25 students who attend a  
workshop session and apply for  
3 scholarships will be randomly  
chosen to receive a \$50!

SAN DIEGO MESA COLLEGE  
The Black Faculty Counselor Collaborative

## Spring 2026 Counseling Drop-In Appointments

- Take the opportunity to meet with a Counselor for...
- Educational/Class Planning
  - Transfer to a university
  - Exploring Majors/Careers
  - Petitions/Appeals/Academic Renewal



Kimberly Williams-Kee  
Tuesdays  
11:00AM-12:00PM



Terrence Hale  
Wednesdays  
1:00PM-2:00PM



Jordan Nash  
Fridays  
10:00AM-11:00AM



Sign-up for a 30-min session by  
visiting:  
[bit.ly/BFCCounselingSignUp](https://bit.ly/BFCCounselingSignUp)  
or using the QR code.

\*Counselor availability may change without notice  
For questions or more information, please contact  
sdmesafollowup@gmail.com or 619-388-2672.

SAN DIEGO MESA COLLEGE

## FROM CONTINUING EDUCATION TO MESA COLLEGE:

EXPLORE YOUR PATH TO A DEGREE OR  
TRANSFERRING TO A UNIVERSITY



Join us to...

- Apply to Mesa College
- Meet with an academic Counselor
- Tour Mesa College Campus
- Learn about Financial Aid options & Student Support Programs and Services

This event  
is FREE

Food will  
be provided

THURSDAY, JANUARY 22, 2026  
8:30AM - 12:00PM  
BUILDING I400 ROOM 202

REGISTER HERE

<https://bit.ly/FromCETOMESACollege>

For questions or accommodations, please contact Ldiaz@sdccd.edu.

SAN DIEGO MESA COLLEGE  
Transfer Center

## TRANSFER APPLICATION UPDATE WORKSHOPS

JANUARY 5 - JANUARY 30

The transfer academic update is the  
next step to transfer after applying  
to CSU/UC schools in the fall.

The update is due January 31!

There will be no workshops on  
1/19 & 1/29



Zoom  
Registration



[bit.ly/MesaTAU26](https://bit.ly/MesaTAU26)

Times

Day	Time	Location
MONDAYS	3PM-5PM	on Zoom
TUESDAYS	12PM-2PM	on Zoom
THURSDAYS	1PM-3PM	In person BT-207
FRIDAYS	10AM-12PM	on Zoom

mesatransfer@sdccd.edu (619) 388-2473 sdmesa.edu/transfer I4-306



### Measure HH Bond Program

Thanks to the overwhelming support of San Diego voters, the San Diego Community College District (SDCCD) is embarking on a bold capital improvement initiative to modernize and transform all district campuses. [Approved in November 2024](#), Measure HH will provide state-of-the-art educational facilities, address long-deferred maintenance needs, and ensure our colleges remain accessible, equitable, and innovative for decades to come. [Click here](#) to read more about Measure HH.

**The Accounts Payable team at the District Office is excited to share that the District is implementing new invoice-processing software to improve efficiency, accuracy, and document security.**

Beginning January 12, 2026, Accounts Payable will use a technology, Brainware OCR and Perceptive Content, to electronically capture invoice data and manage supporting documents. This change will significantly reduce manual data entry and streamline invoice processing.

### What You Need To Know

- All invoices must be submitted to [APinvoice@sdccd.edu](mailto:APinvoice@sdccd.edu), which is stated on all purchase orders
- Invoices must follow the new submission requirements outlined in the attached Accounts Payable Invoice Submission Guidelines
- Only invoices should be sent to this inbox
  - Questions and inquiries should be directed to [APinquiry@sdccd.edu](mailto:APinquiry@sdccd.edu)
- This process **does not apply** to Payment Requests, Travel, or interface files (e.g., Payroll, Financial Aid, Bookstore)

[Please review the attached guidelines carefully](#), as invoices that do not meet the requirements may be delayed. Thank you for reviewing this information so you are aware of the new process and can help direct suppliers if questions arise during the District's rollout.

### Adobe Post Migration Email

District Information Technology Services has announced the successful migration of your employee Adobe account to the district's new Adobe platform.

### What do I need to do?

- To activate your new license, please **log out** of any open Adobe applications.
- **Restart** your computer and log back into Adobe by relaunching an Adobe application or the Creative Cloud Manager icon on your desktop.
- **Your district email address** and **password** will be used for this login. If presented with the choice of "personal" or "company or school,"
- Please choose **"company or school."**

### Important Additional Information

**If your job function requires additional Adobe Software that you do not have access to on this new platform:**

**A Service Desk request with your supervisor's approval will be necessary:** [Request Additional Adobe Software](#).

Once approved, you will be able to install your approved software from the Adobe Creative Cloud icon on your desktop.

If you have any issues or questions, please feel free to contact the service desk by email at [itservicedesk@sdccd.edu](mailto:itservicedesk@sdccd.edu) or 619-388-7000.



To help us maintain a safe, clean, and fully operational campus, please remember that all requests for Facilities support should be submitted through the [Facilities Work Order System](#). This system ensures your request is routed to the correct team and allows us to track progress and response times.

**You may submit a work order for issues such as:**

- Elevator outages
- Water leaks or plumbing concerns
- Broken glass or damaged fixtures
- Cleaning needs (urgent or routine)
- Heating/cooling concerns
- Lighting or electrical issues
- General repairs or maintenance

Thank you for helping us keep our campus environment safe and welcoming. If you have questions about the process, please feel free to contact the Facilities Services at 619.388.2814.

## RSVP TODAY FOR **ALICE TRAINING** Active Shooter Training & Preparedness



As part of our ongoing commitment to campus safety and preparedness, we have scheduled a series of safety trainings and events for 2026. All employees are encouraged to attend at least one ALICE training during the year.

Each ALICE session will focus on situational awareness, response options in an active threat situation, and practical strategies to increase personal and community safety on campus.

### **Personalized ALICE Trainings for Buildings**

Building Managers may also request a customized, building-specific ALICE training for their area. To schedule a session tailored to your building's layout and needs, please contact: Sgt. Mark Green ([mgreen@sdccd.edu](mailto:mgreen@sdccd.edu))

### **Schedule:**

[Friday, January 30, 2026; 1:00 pm - 4:00 pm](#)

[Friday, April 10, 2026; 8:00 am - 12:00 pm](#)

[Friday, August 21, 2026; 8:00 am - 12:00 pm](#)

[Friday, October 16, 2026; 1:00 pm - 4:00 pm](#)

## EVENTS AND OPERATIONS

### **When to Call Events/Operations vs Facilities**

#### Events and Operations

- Event Requests
  - Room Reservations
  - Setups
  - Event Parking
- Parking
- Site Improvements
- Furniture Requests
- Office Relocations

#### Facilities

- HVAC
- Leaks
- Restrooms and related supplies
- Landscaping
- Minor Repairs

**Facilities: 619-388-2814**

**Events & Ops: 619-388-5881**

## SAFETY

### **Workplace Campus Safety vs Public Safety**

#### Workplace Safety

- Cal/OSHA
- Emergency Management
- C-CERT
- Facilities Inspections
- Permits
- Hazardous Waste
- Biohazardous Waste
- Training
- Ergonomics

#### Public Safety

- Public Disturbances
- Medical Emergencies
- Theft
- Threats
- Criminal Behavior
- Mental Health Issues
- Suspicious Circumstances
- Anything Requiring Immediate Response

**Police Dispatch: 619-388-6405**

[Click here](#) to learn which administrative areas are involved in managing our college operations.

---

## OFFICE OF *Institutional Effectiveness*

### **IE Office Hours – A Dedicated Time to Think Through Your Data Together**

The Institutional Effectiveness (IE) Office is launching weekly Office Hours to serve as a partner for your data questions and ideas. Whether you're exploring data for program review or accreditation, thinking through how to use our dashboards, or simply trying to make sense of what the data is telling you, we welcome the opportunity to work alongside you. During the Spring semester, **from January 20 (Flex Week) through June 1**, we will pilot these new office hours. Join us **Tuesdays from 12:30–1:30 p.m.** in the IE Office (A-109). We have a conference room for collaborative conversations—and yes, there's coffee too! We look forward to being your data thought partner.

The Office of Institutional Effectiveness is excited to announce the launch of the redesigned [Transfer Volume Dashboard](#), an interactive tool that provides a comprehensive view of Mesa College students who successfully transferred to four-year universities using the Student-Centered Funding Formula (SCFF) methodology.

This dashboard allows users to:

**Explore annual transfer trends**, top university destinations, and common majors pursued by Mesa transfer students.

**Examine efficiency metrics**, including time to transfer and units earned.

**Analyze equity gaps** to understand whether transfer outcomes are proportional across student populations.

These insights support institutional planning, illuminate key student pathways, and help the college strengthen strategies that promote equitable and timely transfer for all students.

You can access the Transfer Volume Dashboard [here](#)

. Note: Access requires SDCCD Single-Sign-On credentials. If you are logged in and cannot access the dashboard, please follow this [instructions](#).

To schedule a demo, ask questions, or provide feedback, please contact [acaetanofournier@sdccd.edu](mailto:acaetanofournier@sdccd.edu) and [ncortes@sdccd.edu](mailto:ncortes@sdccd.edu).

---

# FOUNDATION CORNER

A space to learn about our latest efforts to connect partners who share our passion for education with opportunities to give. See how fundraising can help you, our students, and Mesa's mission.

[Learn More](#)



**Please take a moment to complete the “Mesa Dreams” survey. Your feedback helps us better serve you and guide our future fundraising goals.**

*Co-Creating  
Possibilities*

## GIVE YOUR INPUT, SHAPE MESA'S FUNDRAISING GOALS

Mesa is taking part in a district-wide fundraising campaign to raise more philanthropic dollars. We will be making a set of brochures to share fundraising priorities & campus needs.

We need your help defining what will be “on the menu” for donors to give to!

Please take a moment to complete the “Mesa Dreams” survey, which:

- Takes 10–15 minutes
- Has 14–16 questions
- Aims to capture your needs, as well as your boldest wish list
- Will shape fundraising goals
- Asks you to dream big!

[bit.ly/MesaDreams25](https://bit.ly/MesaDreams25)

SCAN HERE:



### **Want to learn more about grant seeking?**

View the flex workshop hosted by Dr. Michael Lettieri, who is leading grant writing efforts, and Krista Stellmacher, CFRE and Director in service to the Office of Resource Development and Foundation.

[View Recording](#)



---

## Participatory Governance

To learn more about our Associated Students, Academic Senate, and Classified Senate, please visit the links below:

[Associated Students](#)

[Academic Senate](#)

[Classified Senate](#)

## In The Know

For additional information on what is happening on campus and in our community - visit the links below:

[Mesa College Newsroom](#)

[Mesa College Events Calendar](#)

---

**Ashanti Hands, Ed.D.**

**President | San Diego Mesa College**

*Creating conditions that matter for our students to succeed!*

7250 Mesa College Drive, A-104, SD, CA 92111 | 619.388.2721

[Mesa College](#) | [Student Support Services](#)

